



## ERC16-20VA

### Key features

Primary Task: **Lifting and Stacking**

Environment: **Indoor**

Load Weight: **1600-2000 kg**

Max Lift Height: **3430-5500 mm**

Power Source: **Electric**



### 4 Wheel Electric Forklift Truck Cushion Tyre

A compact, energy efficient electric fork lift trucks designed specifically for internal confined space applications

This 4 wheel, front wheel drive cushion tyre electric counterbalanced forklift truck is powerful, highly manoeuvrable and extremely stable in high stacking applications.

With a platform width of 945mm (1.6T and 1.8T) and 986 mm (2.0T) it is ideal in applications that require a tight turning circle (AST4) and narrow dimensions for stacking 1000mm wide loads.

Ergonomic features that provide operator comfort and operational efficiency

- Generous foot space and a low intermediate step height provide a comfortable working space with easy on and off access
- A fully adjustable full suspension low vibration seat (0.3-0.5m/s<sup>2</sup>) helps reduce the transmission of truck and floor condition vibration to the operator
- The 'heads up' display helps keep the operators field of vision clear and provides 'at a glance' information on truck operating conditions and performance settings
- An adjustable mini-lever module armrest with built-in hydraulic controls, directional switch, emergency disconnect button and warning horn button
- The auto deceleration system (ADS) reduces operator fatigue

Performance features that deliver efficient handling and high levels of productivity

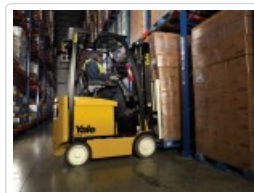
- A vehicle system manager (VSM) allows adjustment of truck parameters as well as monitoring key truck functions to provide operator and application matched performance
- The HiP (High Performance) setting delivers a competitive performance of 18.4km/h (laden) while the eLo (Energy Low) setting delivers the lowest energy consumption of 4.5kW/h (1.6T) and 4.93kW/h (1.8T) and 5.53kW/h (2.0T) on the VDI 2198 test cycle

- The high seating position for operators provides a clear view of the fork tips for fast and efficient load spotting
- The continuous stability enhancement system (CSE) optimises steer axle geometry to reduce truck lean when cornering resulting in confident load handling and faster throughput times
- The e-Balance of performance, manoeuvrability and battery shift life which can all be matched to the application needs increase productivity and throughput, significantly reducing the cost per pallet moved
- A 'Return to set' tilt function is available as an option to further increase productivity and accuracy in load spotting

Model	Load Capacity (kg)	Lift Height (mm)	Battery Capacity (V / Ah)	radius	centre
ERC16VA	1600	5500	48V / 660Ah	1644	500
ERC18VA	1800	5500	48V / 660Ah	1657	500
ERC20VA	2000	5500	48V / 660Ah	1692	500

**ERC16-20VA** - Specification Sheet

**Yale® czołowe wózki widłowe oraz urządzenia magazynowe** - Pełna oferta produktowa



#### WÓZKI NOWE

#### SERWIS

#### CZĘŚCI

#### WÓZKI UŻYWANE

#### FINANSOWANIE

#### OUTSOURCING

##### Oddział Szczecin

ul. Szczawiowa 53d  
70-010 Szczecin  
tel. 91 489 33 93  
fax 91 482 82 18  
szczecin@yale.emtor.pl

##### Oddział Słupsk

ul. Poznańska 83  
76-200 Słupsk  
tel. 59 841 10 64  
fax 59 841 10 64  
slupsk@yale.emtor.pl

##### Oddział Gdańsk

ul. Glazurowa 7  
Kowale, 80-180 Gdańsk  
tel. 58 301 89 46  
fax 58 301 89 46  
gdansk@yale.emtor.pl

##### Oddział Poznań

ul. Pilotów 19  
Janikowo, 62-006 Kobylnica  
tel. 61 653 31 57  
fax 61 653 31 58  
poznan@yale.emtor.pl

##### Oddział Warszawa

ul. Serwituty 25  
02-233 Warszawa  
tel. 22 343 94 85  
fax 22 343 94 86  
warszawa@yale.emtor.pl

##### Oddział Wrocław

ul. Rakowa 28  
51-421 Wrocław  
tel. 71 325 28 06  
fax 71 325 28 20  
wroclaw@yale.emtor.pl

##### Oddział Kraków

ul. Cechowa 51  
30-614 Kraków  
tel. 12 659 57 40  
fax 12 659 57 40  
krakow@yale.emtor.pl

**Emtor Sp. z o.o.** ■ ul. Włocławska 147-157 ■ 87-100 Toruń ■ tel. 56 654 89 35 ■ fax 56 654 89 36 ■ biuro@yale.emtor.pl ■ www.yale.emtor.pl ■ NIP: 956-213-74-53 ■ Nr KRS: 0000122446  
Sąd Rejonowy w Toruniu VII Wydział Gospodarczy KRS ■ Wartość kapitału zakładowego 3.000.000 zł

**EMTOR**

wyłączny przedstawiciel marki

**Yale**  
People. Products. Productivity.